

Contractors Essentials

Edition 2



resapol[®]

Specialist Construction Products



GCP & RIW have combined forces to bring you **more solutions, more expertise** and **more support**.



For support on your next project contact us on:



01753 944 200



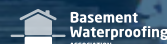
info-gb@gcpat.com



PROUDLY PART OF SAINT-GOBAIN

Resapol is the leading national independent supplier of specialist construction products in the UK, we specialise in stocking and supplying a huge range of quality construction chemicals. Combining swift delivery and a huge stock of products, we supply the foundation for your success.

-  Nationwide depots including 2 Supercentres
-  Distributing world class quality products
-  Over 6,000 construction products available
-  Unrivalled technical support
-  Same / next day delivery
-  Award winning company
-  We are members of the Concrete Repair Association, Sprayed Concrete Association, The Structural Concrete Alliance, FeRFA and The Basement Waterproofing Association with whom we share knowledge, training and expertise.
-  Resapol holds ISO 9001:2015, ISO 14001:2015, and ISO 45001:2018 accreditations



branches nationwide
including 2 Supercentres



page 3	Introduction
page 4	Depot Locations
page 5	Concrete Repair & Protection
page 13	Grouts & Anchors
page 19	Waterproofing
page 27	Joint Sealants & Adhesives
page 33	Flooring
page 41	Highways & Urban Landscaping
page 47	Roofing
page 51	Sundries

0800 083 1942

sales@resapol.com www.resapol.com



Concrete Repair & Protection

Despite the many benefits that concrete offers, it also does have some inherent problems which can cause issues over the lifetime of a structure.

That's why we supply an extensive range of products to tackle the problem and extend the structural lifespan, these include repair mortars, structural strengthening and protective coatings.

Sika MonoTop®-4012

Sika MonoTop®-4012 is a 1-part, cementitious, fibre reinforced, low shrinkage repair mortar. It contains recycled waste materials and can reduce the carbon footprint application activity calculations.



Product	Size	Yield
Sika MonoTop®-4012	25kg	13.7 litres
SikaTop® Armatex® 110 EpoCem®	20kg	Refer to data sheet

Sika Monotop®-3020

Sika MonoTop®-3020 is a 1-part, cementitious polymer modified, low shrinkage surfacing/ finishing mortar. It contains recycled waste materials and can reduce the carbon footprint application activity calculations. It can be used as a concrete pore filler and levelling mortar.



Product	Size	Yield
Sika Monotop®-3020	25kg	14.85 litres
SikaTop® Armatex® 110 EpoCem®	20kg	Refer to data sheet

Sika Monotop®-1010

Sika MonoTop®-1010 is a 1-part, cementitious, polymer modified coating material used as bonding primer and reinforcement corrosion protection. It contains recycled waste materials which leads to a reduced carbon footprint compared to an equivalent performing mortar.



Product	Size	Yield
Sika Monotop®-1010	25kg	14.3 litres

DISTRIBUTING INNOVATIVE CONSTRUCTION SOLUTIONS TO BUILD THE MODERN WORLD



Sika UK solutions are developed with our customers in mind. We take pride in building long-lasting relationships with Specialist Distributors to supply the construction sector with the innovative products you need.



BUILDING TRUST

TO SEE OUR FULL RANGE
VISIT **SIKA.CO.UK**

Sika MonoTop®-630

Sika MonoTop®-630 Rapid (previously Sika® Rapid Repair Mortar) is a one component fast setting cementitious repair mortar, meeting the requirements of Class R4 of EN 1504-3.



Product	Size	Yield
Sika MonoTop®-630	25kg	~ 2.10kg/m ² /mm
SikaTop® Armatex® 110 EpoCem®	20kg	Refer to data sheet

Sika Monotop®-615

Sika MonoTop®-615 is a one-component, cement based, polymer modified, high build repair and reprofiling mortar, meeting the requirements of Class R3 of EN 1504-3.



Product	Size	Yield
Sika Monotop®-615	25kg	~ 1.65kg/m ² /mm
SikaTop® Armatex® 110 EpoCem®	20kg	Refer to data sheet

Natcem 35 Grey

NATCEM 35 is a fast setting and fast curing mortar with a rapid strength gain that is resistant to chloride penetration, consisting of a blend of NATCEM Reg.31 Cement Binder, specially selected dried graded aggregates all passing a 2mm sieve and retarders. Approved for use in public water supplies. Environmentally friendly.



Product	Size	Yield
Natcem 35 Grey	25kg	12.5 litres
Natcem Waterstop	25kg	2 litres

Fastfill

A single component, polymer modified, fibre reinforced, Portland cement based repair mortar. Specifically designed for the structural repair and reinstatement of concrete in heavy wear areas such as roads, runways, bridges, decks, floors, footpaths, tidal areas and areas which cannot be taken out of service for long periods. CE-marked in accordance with BS EN 1504-3, Class R4.



Product	Size	Yield
Fastfill	25kg	13.3 litres
Cure-Seal WB	5ltr	25-35m ²

Monomix HD

A single component, standard density cementitious mortar which is polymer modified and fibre reinforced. The product's thixotropic nature enables easy, high build hand and trowel application for the structural repair of voids and the rendering and re-profiling of vertical, horizontal and overhead surfaces. It can also be applied using spray techniques in large areas.



Product	Size	Yield
Monomix HD	25kg	13.1 litres
Cure-Seal WB	5ltr	25-35m ²

Mapei Planitop Smooth & Repair R4 Zero

A one component, thixotropic, fibre reinforced mortar for structural repairs and smoothing over internal and external horizontal and vertical concrete surfaces. Part of the CO2 fully offset in the entire life cycle range of products. Suitable for repairing structures exposed to the open air and in permanent contact with water. Applied in a single layer from 3 to 40mm thick.



Product	Size	Yield
Planitop Smooth & Repair R4 Zero	25kg	Refer to data sheet

webercem HB40

A single-component, polymer-modified, high build cementitious mortar, designed for structural concrete repairs. It requires only the addition of clean water to produce a lightweight, low permeability, high strength mortar for both soffit and vertical repair situations. This product has been formulated to comply with the requirements of BS EN 1504-3 as an R3 mortar.



Product	Size	Yield
webercem HB40	20kg	13 litres
webercem bondcoat	20kg	5 - 8m ²

webercem spray DS

A pre-bagged, ready-to-use, polymer-modified, cement-based structural concrete. It contains graded inert limestone aggregates and dust suppressants. The formulation has been designed specially for dry process spray application to give high strength, low rebound and wastage, and to maximise the application thickness. Conformity testing to BS EN 1504-3 has confirmed that webercem spray DS meets the requirements for a Class R4 repair product.



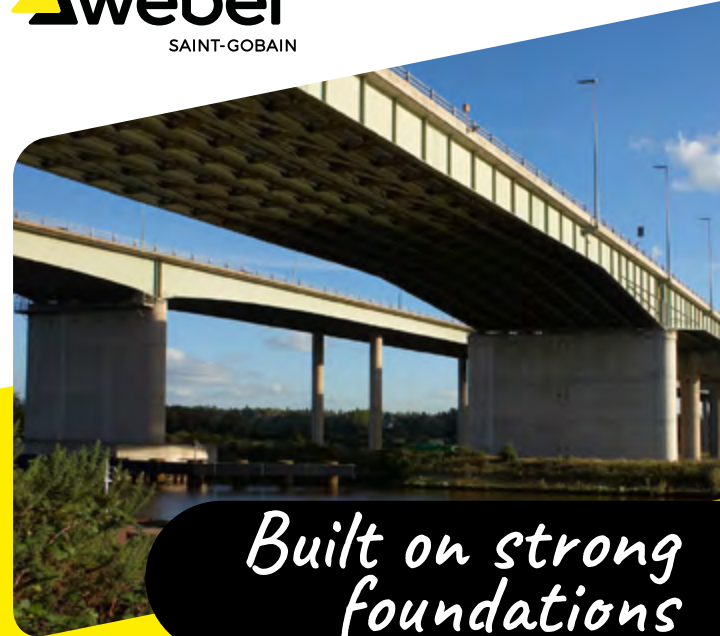
Product	Size	Yield
webercem spray DS	25kg	12 litres

webercem advanced repair concrete

A pre-blended cementitious repair concrete which complies with the National Highways Specification for Highway Works white book Series 5700 Structural Concrete. Conformity testing to BS EN 1504-3 has confirmed that webercem advanced repair concrete meets the requirements for a Class R4 repair product.



Product	Size	Yield
webercem advanced repair concrete	25kg	12.75 litres



Built on strong foundations

The repair and protection of reinforced concrete structures has been a key activity in the construction industry for decades and Weber products have been specified as a solution for over 70 years!



Follow us



www.uk.weber

webercem HB30

Single-component, polymer-modified, high build R3 cementitious mortar, designed for concrete repairs to facades. It requires only the addition of clean water to produce a lightweight, low permeability, medium strength mortar suitable for both soffit and vertical repair situations.



Product	Size	Yield
webercem HB30	20g	13 litres
webercem Bondcoat	20g	5 - 8m ²

Renderoc HB45

High performance, hand/wet spray applied, fibre reinforced high build concrete reinstatement mortar conforming to the requirements of BS EN 1504-3 Class R4. Specifically developed for the repair of columns and beams, but because of its medium fresh wet density, is also suitable for soffit repairs.



Product	Size	Yield
Renderoc HB45	25kg	14 litres
Nitoprime Zincrich Plus	0.8 & 1.9ltr	8 m ² /litre
Renderoc Primer	5 & 25kg	2m ² /litre

Renderoc DS

A dry spray material designed for concrete repairs to buildings, bridges, tunnels and marine structures such as culverts. It can be used for both isolated and large area repairs to beams, columns and panels. In addition it can be used as wide scale overlay system to increase cover to the reinforcement.



Product	Size	Yield
Renderoc DS	25kg	12.5 litres
Nitoprime Zincrich Plus	0.8 & 1.9ltr	8 m ² /litre
Nitobond AR	5ltr	6-10m ² /litre



Grouts & Anchors

We know that stability is the key to structural integrity, this is why we offer a comprehensive range of solutions.

Whether the application is industrial, civil, commercial or residential our expertise can help you select the correct product from our range based on your stability, flowability, application and strength needs.

Conbextra GP

High-flow, non-shrink, cementitious grout conforming to the requirements of BS EN 1504-3 Class R4 and BS EN 1504-6: Anchoring of reinforcing steel bar. For grouting of gap thicknesses 10 to 75 mm.



Product	Size	Yield
Conbextra GP	25kg	12 - 13.25 litres
Concure WB	20 & 200ltr	3.5 - 5.0 m ² /litre

Conbextra UW

Conbextra UW is a free flow or pumped non-shrink, cementitious grout for use underwater or in tidal zones where "wash out" would be a problem with conventional grouts. Conforms to the requirements of BS EN 1504-3 Class R4.



Product	Size	Yield
Conbextra UW	25kg	14.5 litres
Concure WB	20 & 200ltr	3.5 - 5.0 m ² /litre
Nitoseal MS60 (Various Colours)	380 & 600ml	Refer to data sheet

Conbextra HF

High-flow, non-shrink, cementitious grout conforming to the requirements of BS EN 1504-3 Class R4 and BS EN 1504-6: Anchoring of reinforcing steel bar. For grouting of gap thicknesses 10 to 100 mm.



Product	Size	Yield
Conbextra HF	25kg	13.25 - 13.5 litres
Concure WB	20 & 200ltr	3.5 - 5.0 m ² /litre
Polyjoint Strip	Various	N/A
Conbextra TS	25kg	12 litres

Conbextra EPR

For grouting gap thicknesses from 10 to 120 mm. A three-component system consisting of base resin, liquid hardener and specially graded inert fillers, which are mixed and poured into the gap. Conforms to the requirements of BS EN1504-3 and BS EN 1504-6 Anchoring of reinforcing steel bar.



Product	Size	Yield
Conbextra EPR	15ltr	Refer to data sheet
Nitoprime 28	0.45 & 4.2ltr	Refer to data sheet

Conbextra TS

A high-flow, non-shrink, aggregate filled cementitious grout conforming to the requirements of BS EN 1504-3 Class R4. Used for free flow, non-shrink, cementitious grouting for gap thicknesses 75 to 500 mm



Product	Size	Yield
Conbextra TS	25kg	12 litres
Concure WB	20 & 200ltr	3.5 - 5.0 m ² /litre
Conbextra HF	25kg	13.25 - 13.5 litres

Mapefill Zero

A pre-blended mortar in powder form made from high-strength cement, selected aggregates and special additives including an expansive agent. Suitable for repairing degraded structures that need to be reintegrated with hi-flow mortar and for anchoring machinery or metal structures accurately in position. Part of the CO2 fully offset in the entire life cycle range of products.



Product	Size	Yield
Mapefill Zero	25kg	Refer to data sheet

SikaGrout®-111 GP

SikaGrout®-111 GP is a one part flowable shrinkage compensated general purpose cementitious grout. Meets the requirements of BS EN 1504-6. Anchoring of reinforcing bars.



Product	Size	Yield
SikaGrout®-111 GP	25kg	13 litres
Sikafloor® ProSeal	20 & 200ltr	Refer to data sheet

Sika AnchorFix®-1

Solvent and styrene free based, two-component polyester anchoring adhesive. For use with rebars/ reinforcing steel, threaded rods, bolts and special fastening systems, concrete, hollow and solid masonry, hard natural stone and solid rock.



Product	Size	Yield
Sika AnchorFix®-1	300ml	Refer to data sheet
Skeleton Gun	400ml	N/A

Parex® CS Grout

A Portland cement based product giving high strength, high flow and non-shrink properties. Placed grout gives structural support and good vibration resistance. Chloride free and can be safely used in contact with steel. Low water absorption plus resistance to sea water and mild alkali attack.



PAREX

Product	Size	Yield
Parex® CS Grout	25kg	13.25 litres
Sikafloor® ProSeal	20 & 200ltr	Refer to data sheet

webercem advanced precision grout

webercem advanced precision grout is a premixed cementitious grout developed for applications where an economical grout with good flow and strength is required. webercem advanced precision grout is based on specially selected Portland cements, graded aggregates and admixtures. Complies with BS EN 1504-3 and -6.



Product	Size	Yield
webercem advanced precision grout	25kg	14 litres

webercem grout eco

webercem grout eco is a premixed, non-shrink cementitious grout developed for applications where a cost-efficient grout with adequate flow and strength is required. webercem grout eco is designed primarily as a pourable grout but can also be used at a plastic or dry pack consistency. Complies with BS EN 15604-3 AND -6.



Product	Size	Yield
webercem grout eco	25kg	Refer to data sheet

rbs Injection Resin LV Kit

A two component, low viscosity, fast curing epoxy sealing system specially formulated for repairing cracks, ensuring structures remain safe and robust. The ideal solution including all the necessary components for a successful repair on walls or floors. Kit contents:



3x 250ml Injection Resin, 2x Mixer Nozzles, 2x Applicator Fan, 2x 300ml Crack Sealer, 3x Cartridge Outlet Plug, 3x Injection resin mixers with extension tube, 1x Push fit connector, 16x Injection Ports, 2x Pairs of gloves, 2x Wooden Applicators.



Product	Size	Yield
rbs Injection Resin LV Kit	Kit	Refer to data sheet

rbs P400C Cartridge

rbs P400C is a styrenated polyester resin 400ml coaxial cartridge system with a resin to hardener ratio of 10 parts to 1. The cartridge has a coaxial nozzle outlet and is sealed with the screw cap.



Product	Size	Yield
rbs P400C Cartridge	400ml	Refer to data sheet
Resin Applicator Gun	400ml	N/A

rbs Anchor Grout S

rbs Anchor Grout S is a two component system consisting of a liquid polyester resin and catalysed filler, specifically designed as a fast setting free flow material for the anchoring of bolts and dowels into vertically downward holes.



Product	Size	Yield
rbs Anchor Grout S	5.5kg	2.75ltr

rbs Epoxy Pourable Grout

A three pack high flow epoxy grout, with excellent low temperature curing characteristics. High compressive and tensile strength gains make it capable of withstanding high dynamic loads. Also provides excellent chemical resistance, good flow characteristics and negligible shrinkage.



Product	Size	Yield
rbs Epoxy Pourable Grout	25kg	12.5ltr



Waterproofing

Our wide range of waterproofing products are aimed to aid you in keeping structures safe from water damage.

We offer a wide range of systems including, but not limited to, market leading waterproofing membranes, hydrophilic waterstops, admixtures and sheet drainage systems.

Vandex BB 75

Vandex BB 75 is a BBA approved cementitious, efflorescence free waterproof slurry with excellent hydrophobic properties. Manufactured specifically for concrete and masonry, BB 75 is best known for its excellent results when waterproofing basements, walls and floors. It is also suitable as corrosion protection for reinforcing steel.



Product	Size	Yield
Vandex BB 75 Grey & White	25kg	Refer to data sheet
Vandex PK 75	10kg	Refer to data sheet
Cemelast Liquid	9kg	Refer to data sheet

Vandex Plug

A cementitious, ready-mixed, rapid setting compound to stop water and moisture ingress. Vandex Plug can be used internally or externally as a waterproof plugging mortar or where rapid setting and early strength gain is required. Sets in approx. 30 seconds.



Product	Size	Yield
Vandex Plug	15kg	Refer to data sheet

Vandex PK 75

Vandex PK75 is a liquid polymer that is added to Vandex BB75 to form an elasticised waterproofing slurry known as Vandex BB75-E. One container of Vandex PK75 is used for each 25 kg bag of Vandex BB75. The addition of Vandex PK 75 polymer provides elasticity and enhanced crack bridging properties to the slurry.



Product	Size	Yield
Vandex PK 75	15kg	Refer to data sheet

SikaProof® A+ 08

A polyolefin (FPO) based sheet membrane for below ground waterproofing of reinforced concrete structures. The membrane can be pre or post-applied. A special hybrid bonding layer on the membrane forms a full and permanent dual bond with the concrete structure. Joints are sealed with cold-applied tapes. The total thickness is 1.35mm with a membrane thickness of 0.80 mm.



Product	Size	Yield
SikaProof® A+ 08	1x25m, 2x25m	N/A
SikaProof® Tape A+	150 x 25m	N/A
SikaProof® Sandwich Tape	50mm x 25mm	N/A

SikaSwell®

SikaSwell® swellable profiles and sealants are a tested and proven range of extremely cost effective hydrophilic joint sealing systems. Easily bonded to joints and penetrations in concrete with appropriate adhesive.



Product	Size	Yield
SikaSwell® A 2010	10m	N/A
SikaSwell® S2	600ml	Refer to data sheet

Sika®-1 Pre-bagged System

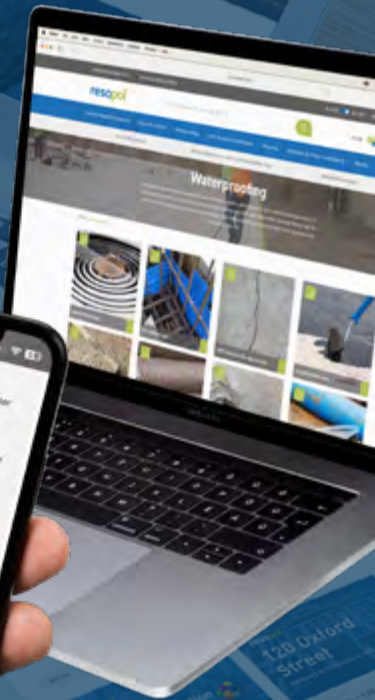
Sika's structural waterproofing render system can be applied to walls and floors and is available as a screed and render system. The system can be used to meet the requirements of all 3 grades of waterproofing, as outlined by BS8102: 2010.



Product	Size	Yield
Sika®-1 Pre-bag Spritz Mortar	25kg	12.3L
Sika®-1 Pre-bag Render Mortar	25kg	12.3L
Sika®-1 Pre-bag Finishing Mortar	25kg	12.3L
Sika®-1 Pre-bag Screed Mortar	25kg	12.3L

resapol.com

- Latest resapol news
- Product information
- Case studies
- Brochure downloads
- Training information
- Datasheets



resapol®

RIW Sheetseal 226

Sheetseal 226 is a cold applied, high density polyethylene film, coated with a bitumen/rubber self-adhesive layer with a removable reinforced silicone paper. The product generally requires Sheetseal primer for vertical or sloping surfaces. Sheetseal 226 is typically used as a basement tanking system, or as a ground floor damp proof membrane.



RIW

Product	Size	Yield
RIW Sheetseal 226	19.05m x 1.05m	N/A
Sheetseal Primer	5 & 25ltr	7m ² per litre/coat
RIW Bitumen Protection Board	3mm x 2.03m x 0.9m	N/A

RIW LAC

Liquid Asphaltic Composition is a two coat, cold applied damp proof membrane, which dries to a uniform gloss black finish. The coating is a solution of natural and petroleum bitumens in white spirit. Typically used as a damp proof membrane to ground floors, as a vapour barrier behind cladding and for tanking of basements.



RIW

Product	Size	Yield
RIW LAC	5 & 25ltr	1m ² / litre (typical) 1.25m ² / litre (steelwork)

RIW Toughseal Eco

A solvent free polymer modified epoxide coating, supplied as a two part pack of base and hardener in pre-measured proportions. Typically used to provide a water and water vapour proof barrier, or to give protection against abrasion, fresh and salt water, carbon dioxide, alkalis and dilute mineral acids. LEED v4 Environmental Quality Low VOC Compliant. Available in Black and Grey.



RIW

Product	Size	Yield
RIW Toughseal Eco	5ltr & 25ltr	4m ² / litre / coat

Preprufe 300R Plus

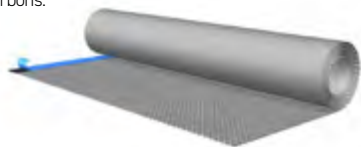
Preprufe Plus waterproof membranes are composite sheets comprising a robust virgin HDPE backing, a pressure sensitive adhesive and a trafficable weather resistant coating with dual adhesive Preprufe ZipLap™ for increased security and practicability at overlap. For waterproofing and protection of slabs and confined walls below ground.



Product	Size	Yield
Preprufe® 300R Plus	30m x 1.2m	N/A
Preprufe® Tape LT	15m x 100mm	N/A
Bituthene® LM	5.7ltr	Refer to data sheet

Proofex Engage

A robust pre-applied, fully bonded, gas-resistant waterproofing membrane for use in below ground, reinforced concrete structures. Proofex Engage provides water, water vapour and gas protection to water excluding structures and protects concrete from aggressive ground salts, chemicals and hydrocarbons.



Product	Size	Yield
Proofex Engage	15kg	Refer to data sheet

Sigma GPS Universal Gas Barrier

Sigma GPS Universal Gas Barrier is a monolithic hybrid virgin polymer manufactured using the blown extrusion method. It prevents the transmission of harmful gases and contains no recycled materials.



Product	Size	Yield
Sigma GPS Universal Gas Barrier	4m x 20m	N/A
Sigma GPS Gas Tape 50mm	30m	N/A
Sigma GPS Top Hat/Pipe Collar	Various	N/A

rbs Tanking Membrane 3000

A cold applied, flexible waterproofing membrane combining a special high performance cross laminated, HDPE carrier film with a self-adhesive rubber bitumen compound.

The GR version should be used where a membrane is needed to resist the passage of methane and radon gases.



Product	Size	Yield
rbs Tanking Membrane 3000	1.05m x 19.05m	Refer to data sheet
rbs Tanking Membrane GR	1.05m x 19.05m	Refer to data sheet
rbs Tanking Membrane Primer	5ltr & 25ltr	1.5-2.0 Litres/m²

rbs Protection Board

rbs Protection Board is a cold applied, dense bituminous board designed to absorb the toughest impacts and punctures that can be expected on site. The sheet is ideal for laying over the top of newly installed membranes, or it can be pinned vertically to protect external waterproofing from back-filling.



Product	Size	Yield
rbs Protection Board	3m x 1m x 2m	Refer to data sheet

rbs Asphaltic Compound

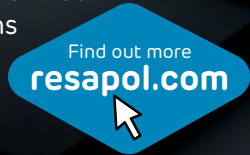
A solvent based, cold applied bituminous compound containing a small amount of organic fibre to add strength and stability. It is typically used as a water-repellent and protective coating that is resistant to water almost immediately after application. Once dry will form an odourless and taint free bitumen film suitable for the protection of above and below ground concrete, brick and blockwork.



Product	Size	Yield
rbs Asphaltic Compound	25ltr	Coat 1: 1.5m² / litre Coat 2: 2.5m² / litre



The rbs range of products offers a wide range of quality product solutions for many different application areas including ...



-  Concrete Repair Products
-  Waterproofing Solutions
-  Formwork Treatments and Release Agents
-  Concrete Curing Agents & Retarders
-  Resin Flooring & Concrete Sealing
-  Cleaners & Maintenance Products
-  Oils & Ancillaries

Resapol 
Foundation

Giving back with every pack

For every rbs product bought, Resapol make a contribution to the Resapol Foundation, helping organisations throughout the UK.



Joint Sealants & Adhesives

At Resapol we supply a comprehensive range of high quality joint sealants for sealing movement joints, expansion joints, construction joints, connection joints and also isolation joints.

Joints are often the weakest part of any structure and while they allow for movement they also need to be protected to remain water and airtight.

Nitoseal MS60

Nitoseal MS60 is a one part, low modulus sealant based on hybrid silyl modified polyether ("MS") technology. Nitoseal MS60 is suitable for sealing joints in concrete, brickwork, blockwork, perimeter sealing around doors and windows, and non-trafficked floor joints.



Product	Size	Yield
Nitoseal MS60 (Grey/White)	380ml	Refer to data sheet
Fosroc Solvent 102	5 & 25ltr	N/A
Nitoseal Primer MS2	750ml	N/A

Nitoseal MS300 Grey

Nitoseal MS300 is suitable for sealing saw-cut and movement joints in internal floors, and external joints where abrasion resistance is required. It can also be used for external facade joints where a tougher seal is required.



Product	Size	Yield
Nitoseal MS300 Grey	600ml	Refer to data sheet
Nitoseal Primer MS2	750ml	N/A
GX Gun	600ml	N/A

Nitoseal MS600 Grey

Nitoseal MS600 is suitable for sealing movement joints in buildings and civil engineering structures including joints that will be subject to intermittent or permanent immersion.



Product	Size	Yield
Nitoseal MS600 Grey	600ml	Refer to data sheet
Nitoseal Primer MS2	750ml	N/A
GX Gun	600ml	N/A

Flamex Two

A high performance sealant forms a tough, flexible rubber-like seal with a movement accommodation factor of 25% for high movement situations. Suitable for expansion joints in building superstructures and may be used in both internal and external joints. Extensively fire tested in accordance with BS 476 Pt:20: 1987. Over 4 and 5 hours insulation and longer integrity rating, depending on joint design.



Product	Size	Yield
Flamex Two Grey	2.5ltr	Refer to data sheet

Thioflex 600 (Gun & Pouring Grades)

The gun grade is ideal for general application and is particularly recommended for use in high-rise buildings and other applications where access for subsequent maintenance will be difficult and the risk of early movement failure must be minimised. The pouring grade is ideal for joints in horizontal surfaces and is recommended for initial sealing of expansion joints and stress relief joints in floors and sealing other horizontal surfaces.



Product	Size	Yield
Thioflex 600 Gun Grade	2.5ltr	Refer to data sheet
Thioflex 600 Pouring Grade	5ltr	Refer to data sheet
Fosroc Primer P7	0.5 & 5ltr	Refer to data sheet
Fosroc Primer 7E	1ltr	Refer to data sheet

Colpor 200PF

For the sealing and maintenance of joints in concrete roads, concrete runways and hard standings. Colpor 200PF is particularly suitable for sealing areas where fuel and oil spillage might occur such as aircraft hardstanding areas, oil terminals, garage forecourts, parking and cargo bays.



Product	Size	Yield
Colpor 200PF	5ltr	Refer to data sheet
Fosroc Primer 20	0.5 & 5L	Refer to data sheet

Sikaflex® PRO-3 Purform®

A 1-part, moisture curing, elastic polyurethane sealant. It seals many kinds of joint configurations in floors and civil engineering structures in both horizontal and vertical applications. The elasticity is maintained over a wide temperature range and high mechanical and chemical resistance provides good durability.



Product	Size	Yield
Sikaflex® PRO3 Purform Grey	600ml	Refer to data sheet
Sika® Primer-3 N	1ltr	Refer to data sheet
Sika® Remover 208	1ltr	Refer to data sheet

Sikaflex®-406 KC

Sikaflex®-406 KC is a 1-part self-levelling booster accelerated elastic floor joint sealant with high mechanical and chemical resistance. Rapid and homogeneous curing throughout the entire sealant is achieved by the addition of the Sikaflex®-406 KC Booster.



Product	Size	Yield
Sikaflex® 406 KC	10ltr	Refer to data sheet
Sikaflex®-406 KC Booster	150 ml	Refer to data sheet
Sika® Primer-3 N	1ltr	Refer to data sheet
Sika® Primer-115	1ltr	Refer to data sheet

Sikaflex®-11 FC Purform®

A 1-part moisture curing elastic adhesive and sealant. It is used for interior and exterior multi-purpose bonding and joint sealing. It has good and durable adhesion to most construction materials.



Product	Size	Yield
Sikaflex® 11FC Purform Grey, Black, Brown, White	300ml	Refer to data sheet
Sika® Primer-215	250ml	Refer to data sheet
Sika® Primer-3 N	1ltr	Refer to data sheet
Sika® Aktivator-205	250ml & 1ltr	Refer to data sheet

Hydrocell XL

Hydrocell XL is a cross linked semi-rigid closed cell polyethylene sheet material used for forming or filling expansion joints between adjacent in-situ or pre-cast components. Hydrocell XL provides excellent support backing to elastomeric sealants and is especially recommended for use in expansion joints in brickwork and in the construction of water retaining and water excluding structures.



Product	Size
Hydrocell XL	10mm Sheet (1000mm X 2000mm) 15mm Sheet (1000mm X 2000mm) 20mm Sheet (1000mm X 2000mm) 25mm Sheet (1000mm X 2000mm)

Joint Backer Rod

Closed cell polyurethane backer rod for use as a backer in expansion joint sealing to avoid three sided adhesion. Quick and easy to use. Improves sealant performance by giving the correct joint size.



Product	Size
Joint Backer Rod	10mm X 1m 13mm X 1m 15mm X 1m 20mm X 1m 25mm X 1m

resapol[®]

Specialist Construction Products

Sustainability and environmental responsibility driving our business practices



Since 1999 we have embarked on a journey to reduce our carbon footprint, ensuring we remain environmentally conscious in all areas of our business. This is a journey we are still on, developing and updating targets and aspirations as we progress.

To align with our goals and the ever increasing customer demand for environmentally friendly and sustainable products, we are offering a continually expanding range from a variety of industry leading manufacturers.

Discover more about Resapol's sustainability by requesting our Sustainable Development Goals document.

To request a copy email:
sales@resapol.com



Flooring

Whether new build or refurbishment project we have a vast array of flooring solutions supplied by leading manufacturers.

We specialise in self smooth compounds, industrial flooring systems, fast patch repairs and epoxy coatings – ensuring that Resapol truly has flooring covered.

Ardex A 46

A rapid repair, slump free mortar which is ideal for external and internal repairs. The polymer modified mortar sets and hardens rapidly to give a repair of high performance, strength and hardness. Ideal for the rapid repair and refacing of concrete surfaces. ARDEX A 46 should only be used for the non-structural repair of concrete.



Product	Size	Yield
Ardex A 46	11kg	8ltr

Ardex A 38

ARDEX A 38 produces ultra-rapid drying floor screeds which can be walked on after just 3 hours, and have floorcoverings installed in as little as 4 hours, regardless of thickness. Use ARDEX A 38 for bonded, unbonded and floating screeds in internal and external locations, including wet areas such as swimming pools.



Product	Size	Yield
Ardex A 46	25g	3.2m ² @ 25mm

Arditex NA

ARDITEX NA is a self-smoothing, protein free, latex levelling compound with improved flow and excellent adhesion, flexibility and moisture resistance. These unique properties ensure that ARDITEX NA can be used with confidence over almost all subfloors without priming, including ceramic tiles, bitumen and flooring grade plywood. Resilient floorcoverings can be installed after just 4 hours and ceramic tiles in as little as 3 hours.



Product	Size	Yield
ARDITEX NA Powder & Latex	20kg & 4.95kg	Refer to data sheet
Ardex Coarse Aggregate	25kg	Refer to data sheet

Sikafloor® Level-30

A polymer modified, pumpable, self levelling fast drying cementitious screed for higher thickness interior or exterior floors, meeting the requirements of class R3 according to EN 1504-3. Sikafloor® Level-30 is ideal to level or smooth screeds and concrete floors at a thickness between 4–30mm in one working step.



Product	Size	Yield
Sikafloor® Level-30	25kg	~ 1.8kg/m ² /mm

Ardex K 301

A fast setting resurfacing and levelling compound for concrete, consisting of special cements, graded aggregates and high quality synthetic resins. When mixed with water, a fluid mortar is produced which sets after approximately 1 hour and can normally be walked on after 2-3 hours. Can be applied from 2mm to 20mm in a single application. Ready to receive light rubber wheeled traffic after 48 hours.



Product	Size	Yield
Ardex K 301	25kg	Refer to data sheet
Ardex DPM 1 C Rapid	3/6/10kg	Refer to data sheet

Tremco SX220

SX220 is a fast setting cement based smoothing product. Ideal for use in domestic an light commercial environments as an underlayment, prior to application of carpet, wood and vinyl flooring. Foot trafficable after approximately 2 hours. Excellent flow for smoothing uneven floors. Low odour and low VOC.



Product	Size	Yield
Tremco SX220	25kg	Refer to data sheet
CS150 Acrylic Primer	5kg & 25kg	Refer to data sheet

weberfloor smooth 4150

A pump or hand applied, self-smoothing thin topping screed for floors, with Low Dust Technology™, which gives a strong surface layer for early floor covering. Designed for use in residential and commercial areas allowing a much earlier overlay compared to traditional sand/ cement, concrete or anhydrite screeds. It provides a smooth and strong finish ideal for receiving a range of final floor coverings.



Product	Size	Yield
weberfloor smooth 4150	25kg	Refer to data sheet
weberfloor fibre rapid 4320	25kg	Refer to data sheet
weberfloor 4716 primer dispersion	5 & 25ltr	Refer to data sheet

weberfloor fibre 4310

A pump or hand applied, self-smoothing, fibre-reinforced base or renovation screed for floors, with Low Dust Technology™, which gives a strong base layer for receiving tiles or a thin topping screed. Designed for the use in residential and commercial areas allowing a much earlier overlay compared to traditional methods. It is ideal for the renovation of existing floors and floating floor constructions.



Product	Size	Yield
weberfloor fibre 4310	25kg	Refer to data sheet
weberfloor 4945 fibre mesh	1m x 100m	N/A
weberfloor 4716 primer dispersion	5 & 25ltr	Refer to data sheet

weberfloor industry pro top 4610

Pump or hand applied, self-smoothing, very hard wearing screed which can level industrial substrates and is ideal as a final finished layer. Designed for use even in heavy industrial areas. It allows full traffic and far superior performance compared to traditional screeds, concrete or anhydrite screeds.



Product	Size	Yield
weberfloor industry pro top 4610	25kg	Refer to data sheet
weberfloor base rapid 4360	25kg	Refer to data sheet
weberfloor 4716 primer dispersion	5 & 25ltr	Refer to data sheet

Leca® Uno

Leca® Uno for filling and levelling interior and exterior floors, applied in a single layer – increasing thermal and acoustic improvement of floors. Suitable for application in new construction and rehabilitation works, in thicknesses from 4 cm. Lightweight concrete applied in a single layer. Each bag weighs 15-17kg



Product	Size	Yield
Leca® Uno	25ltr	Refer to data sheet

Leca® Insuffill

Leca® Insulation Fill is a lightweight expanded clay insulation that cuts foundation time by hours. It is available in 50 litre bags, making insulated foundations (which supports Part L of the Building Regulations) a simple, one man process. What is really clever about Leca® Insulation Fill is that it is stored, collected, transported and laid in the site in the bag and covered. Each bag weighs just 15kg.



Product	Size	Yield
Leca Insuffill	50ltr	Refer to data sheet

Watch all the latest videos on the Resapol Channel

- Product & Systems
- Manufacturer Information
- How To Guides
- Training Days

resapol YouTube

rbs Rapid Concrete

A rapid set, high early strength repair concrete, consisting of a dry blend of polymer modified Portland Cement and limestone aggregate. Its high performance exhibits a fast development of physical properties allowing early return to service, especially suitable for heavily trafficked areas.



Product	Size	Yield
rbs Rapid Concrete	25kg	12.1 -13.1ltr

Paveroc

For the reinstatement of large areas of concrete pavements and floors to avoid the total replacement of bays. Alkaline in nature and will protect embedded steel reinforcement. It may be used internally and externally. Recommended for emergency patching of small areas of concrete pavements and floors.



Product	Size	Yield
Paveroc	25kg	Refer to data sheet
Nitoprime Zincrich Plus	0.8 & 19.ltr	N/A
Nitoflor FC130 (Dark Grey/Silver Grey)	5kg	Refer to data sheet
Nitobond EP	2.5 & 4.5kg	Refer to data sheet

Patchroc 250

For rapid and permanent reinstatement of discrete thick section patches in concrete carriageways, pavements, airport aprons, access ramps and floors. Has a unique cement chemistry to rapidly reinstate thick sections of concrete without excessive heat generation and associated cracking. Particularly useful when interruption of traffic must be minimised. Alkaline in nature and will protect embedded steel reinforcement. It may be used internally and externally.



Product	Size	Yield
Patchroc 250	25kg	12ltr
Nitobond EP	2.5 & 4.5kg	Refer to data sheet

Mapei Topcem Pronto

Ready-mixed mortar with high thermal conductivity, ideal for heated screeds. Ready-to-use, normal-setting, controlled-shrinkage mortar with high thermal efficiency for quick-drying (4 days) screeds. For forming unbonded and bonded screeds on new and existing slabs in interiors and exteriors prior to installing wood, PVC, linoleum, ceramic tile, natural stone, carpet or other floor coverings in areas where fast drying screeds are required in order to lay floorings in a short time.



Product	Size	Yield
Mapei Topcem Pronto	25kg	Refer to data sheet

Mapei Ultratop Industrial

A self-levelling industrial floor screed based on special hydraulic binders for abrasion-resistant flooring, thickness from 5 to 40 mm. Ultratop Industrial is used internally in industrial buildings, for levelling and smoothing new or existing concrete and screed substrates in thicknesses from 5 to 40 mm. Ultratop Industrial can be used inside warehouse industrial areas and surfaces where rubber wheeled vehicles are in use



Product	Size	Yield
Mapei Ultratop Industrial	25kg	16.5-17.5kg/m ² per cm

Mapei Ultraplan Renovation Screed 3240

Fibre reinforced self levelling compound - 3 to 40 mm in a single application. Ultraplan Renovation Screed 3240 is a fibre reinforced self levelling compound, designed for use in the refurbishment of existing floors in both commercial and domestic applications, it can be hand or pump applied.



Product	Size	Yield
Mapei Renovation Screed	25kg	Refer to data sheet



Giving back with every pack ...

The Resapol Foundation is the charitable arm of Resapol Limited. Founded with the purpose of supporting individuals, communities, organisations and charities throughout the UK, with the key focus being on those closest to each of our branches. Each Resapol branch chooses who they would like to support every year.

For every rbs product bought, Resapol make a contribution to the Resapol Foundation, helping organisations throughout the UK.

Visit the [Foundation web page](https://www.resapol.com/resapol-foundation) to find out all the details of who is being supported. [resapol.com/resapol-foundation](https://www.resapol.com/resapol-foundation)

Resapol 
Foundation

Giving back with every pack



Highways & Urban Landscaping

At Resapol we know that highway maintenance is essential to keep roads open and traffic moving and urban landscaping improves city spaces, creating a healthier more sustainable area.

We offer a range of highly effective rapid hardening bonding mortars, epoxy mortars, bedding and jointing solutions among others that can offer unbeatable performance.

Tuffbed 2-Pack

A high performance hydraulic Type 35 bedding mortar that complies with BS 7533-101. All mixing is carried out on site which makes tuffbed 2-pack suitable for commercial and larger public realm projects. Bedding depths of between 30 mm and 70 mm can be placed in a single layer. Depths of up to 140mm can be achieved by placing successive layers. Ideal versatility and workability is achieved with a minimum layer thickness of 30 mm.



Product	Size	Yield
Tuffbed 2-Pack	25kg	Refer to data sheet

Tufftop

tufftop is a high performance, naturally pure hydraulically bonding mortar. Requires only the addition of water. Penetrates even the most irregular joints and cavities and fills joint widths as small as 3 mm. Shrinkage compensated, reducing the risks of failure associated with building permanent stress into bound paving. tufftop is optimised to provide the correct supporting stiffness whilst continually absorbing the thermal and dynamic stresses inherent in bound pavements. Meets or exceeds the requirements of BS7533-101 for Type 40 jointing mortars.



Product	Size	Yield
Tufftop (Natural Grey/Mid Grey/Dark Grey)	25kg	Refer to data sheet

Tuffbond

tuffbond is a bonding (priming) mortar used in bound pavement construction, composing of a blend of cementitious binder and fine aggregate. Is used in bound surface pavement construction to provide a permanent adhesion bond strength of ≥ 2.0 MPa; between the base and the bedding mortar and between the paving units and the bedding mortar when measured in accordance with BS EN 13892-8 after 28 days. To achieve full compliance with BS7533-101:2021 for Traffic Categories 1-9, it is a fundamental requirement and intended for use with tuffbed or tuffbed 2-pack bedding mortars and tufftop jointing mortar.



Product	Size	Yield
Tuffbond	25kg	Refer to data sheet

Steintec's GREEN BAG Is Now Even GREENER

CO₂

EMBODIED CARBON: 167.2 kg CO₂ /t

REDUCTION: 28.7%

tuffbed 2-pack's embodied carbon reduction is valid from bags produced April 2024 onwards.



tuffgrit

tuffgrit is a carefully blended water permeable crushed igneous rock aggregate suitable for bedding natural stone and pre-cast concrete setts, slabs and other pavers. Complies with the requirements of BS7533-13:2009 where either bound or unbound construction methods are used. For applications where heavy trafficking and longevity are required, tuffgrit aggregate is blended specifically to allow optimum interlocking of angular particles leading to extended surface life and enhanced durability. tuffgrit is permeable and free draining. Indefinite, no requirement to be kept dry.



Product	Size	Yield
Tuffbed 2-Pack	25kg	Refer to data sheet

Parex Fine Bedding Concrete

Parex Fine Bedding Concrete (FBC) is a polymer reinforced mortar for the placing and bedding of paving units. The mix design includes special powerful plasticising agents which produce a workable mortar suitable for bedding slabs, pavers and setts. The low water requirement enables the placed mortar to rapidly develop the compressive strength required to support the placed paving elements.



PAREX

Product	Size	Yield
Parex Fine Bedding Concrete	25kg	13.5ltr

Parex Granatech

One component, high strength, shrinkage compensated, low modulus mortar developed in response to demands from contractors for a cost-effective material purpose-made for pointing of natural stone and concrete paving units. The mortar is specially formulated to meet the requirements of architects and engineers requiring compliance with the relevant part of BS 7533. Can be applied speedily over large areas for effective jointing of all paving units.



PAREX

Product	Size	Yield
Parex Granatech (Natural/Mid Grey)	25kg	13.5ltr

webercem pyrabed T60

A cementitious product containing a blend of special cements and graded aggregates, which when mixed with water produces a fast setting bedding mortar for the rapid installation of ironwork and highway furniture. Can be applied to depth of 10 - 100mm in one pass and the rapid strength development characteristics allow the road to be opened to traffic in 60 minutes after placement.



Product	Size	Yield
webercem pyrabed T60	25kg	12.75ltr

webertec bedding mortar standard

webertec bedding mortar is a three-component, polyester-based mortar for the bedding and fixing of manhole frames, airport landing lights, duct frames and precast concrete units. It has been formulated for easy mixing and placement, even at low temperatures and, when cured, provides a durable, chemically resistant bedding and fixing material with good bond strength.



Product	Size	Yield
webertec bedding mortar standard	25kg	12ltr

Larsen Streetscape FBC

Larsen Streetscape FBC is a fine bedding concrete specifically designed to meet the recommended performance characteristics of BS7533. FBC is pre-blended and only requires the addition of water to produce a high quality BS7533 compliant mortar. Streetscape FBC is ideal for the installation of all types of paving including porcelain (>16mm when used with Larsen PS Primer. Eco - reduced carbon.



Product	Size	Yield
Larsen Streetscape FBC	25kg	13ltr
Streetscape PS Primer	25kg	Refer to data sheet

Larsen Highways PM04

A two component multi-purpose polyester resin mortar for use in the installation, raising and reinstatement of ironwork, up to and including installation Group 4 of BS EN 124 where rapid trafficking is required. It is ideal for fixing of utility access cover and frames, highways ironwork, duct frames and pre-cast concrete units. It is particularly suited for use in critical locations and heavily trafficked areas. HAPAS APPROVED



Product	Size	Yield
Larsen Highways PM04	25kg	1m ² @12.5mm

rbs Epoxy Mortar

rbs Epoxy Mortar is a three component bulk pack. Its high strength and non-shrink characteristics provides a repair mortar stronger than concrete in less than 24 hours, as high adhesion, is impermeable to water, oil, petrol and resistant to many chemical spillages.



Product	Size	Yield
rbs Epoxy Mortar	19kg	9ltr

rbs Manhole Cover Grease

rbs Manhole Cover Grease is a premium quality, water resistant grease for use in industrial, automotive and marine applications where the presence of water and humid atmospheres can affect lubricating performance and be detrimental to the protection of parts from corrosion. rbs Manhole Cover Grease is suited for use in plain and anti-friction bearings.



Product	Size	Yield
rbs Manhole Cover Grease	3kg	Refer to data sheet



Roofing

Resapol provide a selection of high performance roofing systems, including liquid applied membranes ideal for not only new roofs but also for renovations and roof repair projects.

Mapei Purtop Easy

Mapei Purtop Easy is a one component coloured ready-to-use waterproof polyurethane membrane designed for roofs terraces and balconies. A highly elastic and durable finish that guarantees substrates are completely waterproof even at low temperatures. Easy to apply by roller or spray on both horizontal and vertical surfaces.



Product	Size
Mapei Purtop Easy Grey	15ltr
Mapecoat I 600 W (Part A & B)	2.3kg (A) and 3.6kg (B)

Mapei Mapetex FG

Glass fibre reinforcing mat used in combination with Purtop Easy (one-component polyurethane membrane).
Weight 100 g/m²



Product	Size
Mapei Mapetex FG	50m x 1m rolls

Mapei Aquaflex S 1K

A ready-to-use, liquid membrane based on silane-terminated polymers for waterproofing: new and existing flat roofs, terraces and balconies before the application of tiles, bathrooms and damp spaces before the application of tiles. Certified to EN 14891 (RM02P) and has obtained the important system certification EAD 030350-00-0402 "Liquid-applied roof waterproofing kit" (former ETAG 005).



Product	Size
Mapei Aquaflex S 1K	5kg and 15kg

Aquaflex S 1K

IMMEDIATE AND LONG-LASTING
WATERPROOFING.



The best way to waterproof roofs, balconies, terraces, bathrooms and showers is to choose **Aquaflex S 1K**. Ready to use and easy to apply, it is solvent-free, multifunctional, durable and resistant to UV rays, fire, cold weather and standing water in both internal and external environments. Extremely ductile and minimum thickness, it is perfect for waterproofing with an exposed finish or before applying a final covering.



0121 508 6970 | mapei.co.uk



Sikalastic® D-10 RoofPro

Sikalastic® D-10 RoofPro is a one-component, cold applied, moisture-triggered polyurethane membrane. It cures to form a seamless and durable waterproofing solution for exposed roof areas and structures.



Product	Size
Sikalastic® D-10 RoofPro (RAL 7045 Cloud Grey, RAL 7011 Storm Grey)	15ltr

Sika® Reemat Premium

Sika® Reemat Premium is a glass fibre mat reinforcement for Decothane® and Sikalastic® Liquid Applied Membrane systems.



Product	Size
Sika® Reemat Premium	0.95m x 1m, 0.3m x 1m, 1.25m x 1m, 0.3m x 90m, 0.95m x 140m, 1.25m x 90m
Sika® Concrete Primer	4.5ltr & 11.5ltr
Sikalastic® Metal Primer	5ltr

Sika® S-Vap 5000 E SA

S-Vap 5000 E SA is a multi-layered, self-adhesive vapour barrier manufactured from polymer modified bitumen with a glass-fibre mat reinforcement and an aluminium foil top layer.



Product	Size
Sika® S-Vap 5000 E SA	1.08 x 30m



Sundries

We stock a wide and comprehensive range of sundries from reinforcing bars to chemical release agents, environmentally friendly curing membranes to water stop injection foams.

To see the full range of products available from resapol visit resapol.com

HeliBar

HeliBar is a helical stainless steel reinforcing bar, with substantial tensile properties, used for strengthening and stabilising masonry in both new build and remedial situations.



Product	Size	Yield
HeliBar	Refer to data sheet	N/A

Sika X-Plug

The X-Plug™ is a mechanical plug specifically designed to seal the void formed in a concrete wall by the removal of a tie bar or pass through tie sleeve.



Product	Size	Yield
Sika X-Plug	Refer to data sheet	N/A

Fosroc Cebex 100

Cebex 100 is an admixture for site batched cementitious grouts where a reduced water/cement ratio and positive expansion is required. Applications include bed grouting, duct grouting, non-shrink infilling and jointing. The expansive medium counteracts the natural settlement and plastic shrinkage of the grout and aids stability and cohesion.



Product	Size	Yield
Fosroc Cebex 100	227g	Refer to data sheet

rbs Bluecure R90

rbs Bluecure R90 is formulated with solvents and inert hydrocarbons and is designed to provide a fast drying, flexible, tough and impervious high efficiency membrane that protects the concrete surface from rapid water evaporation during the initial curing stages. It has a water retention efficiency in excess of 94% when tested in accordance with Clause 1032 of the DTp Specification for Road Pavements— Concrete and Cement—Bound Materials.



Product	Size	Yield
rbs Bluecure R90	5, 20 & 200ltr	5m ² / ltr

rbs Bluelease

rbs Bluelease is an extremely versatile high specification chemical release agent blended with highly active surfactants. The blend of highly active surfactants assist in reducing surface tension at the interface between the concrete and the formwork, ensuring that optimum release is attained hence achieving a high quality concrete surface finish.



Product	Size	Yield
rbs Bluelease	5, 20 & 200ltr	18-30m ² / ltr

rbs Greencure WB

rbs Greencure WB is an environmentally friendly concrete curing membrane. A blue grade version is also available to help in identification during application.



Product	Size	Yield
rbs Greencure WB	5, 20 & 200ltr	5-6m ² / ltr

rbs Greencure Sealer

rbs Greencure Sealer is a ultra low odour single pack white polymeric aqueous emulsion designed to impregnate concrete surfaces thus acting as a curing aid, surface sealer, dust proofer and hardener.



Product	Size	Yield
rbs Greencure Sealer	5, 20 & 200ltr	5-9m ² / ltr

rbs Greentuf

The application of rbs Greentuf to an existing cement bound floor will significantly improve the life of both old and new floors. It not only considerably reduces floor maintenance and subsequent cleaning costs, but also reduces dust hazard to both health and machinery. Application is quick and easy and is proven to inhibit efflorescence in concrete and especially in brick work.



Product	Size	Yield
rbs Greentuf	5 & 20ltr	~ 6m ² / ltr

rbs Brick & Mortar Cleaner

rbs Brick & Mortar Cleaner is a specially selected blend of inorganic acids for the removal of all cement based contamination and rust from a wide range of surfaces.



Product	Size	Yield
rbs Brick & Mortar Cleaner	5, 20 & 200ltr	Refer to data sheet



Celebrating 25 Years

Looking at Resapol now you wouldn't believe it only started in 1999 with a small distribution depot based in Leigh, Greater Manchester.

Consistent reinvestment back into the company has allowed Resapol to now boast nationwide coverage with strategically placed depots across the UK, including two Supercentres.

Reinvesting into Resapol's extensive product range and renowned technical sales support is essential to maintain the reputation as the UK's leading distributor of specialist construction products.

As the company continues to grow year on year the commitment to sustainability, training, innovative products and same/next day delivery, alongside strong core values sets us apart from typical distributors, providing the foundation of Resapol's overall success.

resapol®





Construction
Products



Delivered
Anywhere

resapol[®]

The UK's trusted supplier of Specialist Construction Products

0800 083 1942

sales@resapol.com

www.resapol.com

Resapol Head Office
Unit D4, Walter Leigh Way, Moss Industrial Estate,
Leigh, Lancashire WN7 3PT